

ECO DOORIA


EcoVilla



www.ecodooria.com

www.ecovilla.com





This catalogue contains the best guest houses produces by "EcoVilla" and "EcoDoorria". All the houses boast convenient distribution, maximum comfort and ergonomics. Our houses are produces with the use of high quality materials and are designed for long-term exploitation. We focus on quality, comfort and nice design. We invite you to study our catalogue and choose the house that you have been looking for.

Contents:

2A27	2-5
2A40	6-9
2B27	10-13
2B25	14-17
2C20	18-21
1C31	22-23
About us	24
Workflow	25





2A27

Floor area: 26,8 m². Building area: 38 m². Building volume: 100 m³

"House 2A27" is a small but cozy house with practical and comfortable distribution. The exterior of the house is simple and elegant. Large panoramic windows admit much natural light. The house is made of high quality materials in order to enjoy warmth and comfort any time of the year.

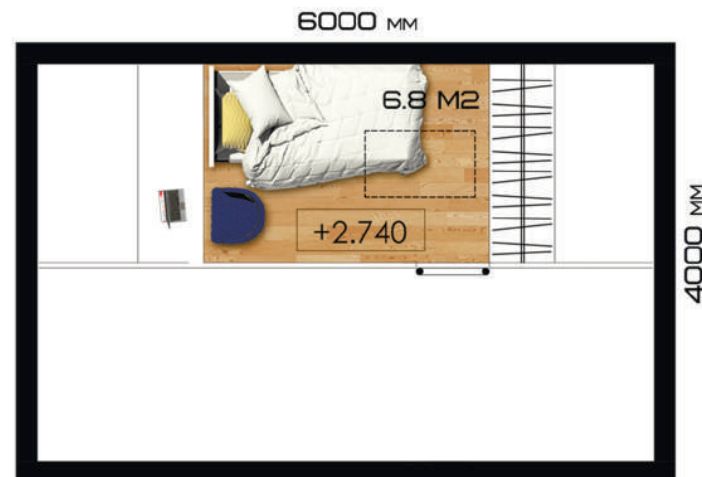
Ergonomic and creative approach to the planning as well as efficient allocation of usable space predisposes to pleasant rest and allows you to feel the cosiness of home-fire.



Ground floor distribution



Attic floor distribution



*Floor area: 26,8 m²
 Building area: 38 m².
 Building volume: 100 m³.*

2A27

The house includes a cozy living room with panoramic windows and access to the veranda, which can be used as an outdoor dining area; on request it is possible to cover the veranda. The living room has direct access to a small kitchen, which is adjacent to an isolated bathroom. The attic floor comprises a bedroom.



2A27

Floor area: 26,8 m².

Building area: 38 m².

Building volume: 100 m³.

«House 2A27» can be detached or adjacent.

There can be a range of two, four or more houses.



Two adjacent houses



A range of six houses



In section

Ground floor distribution



Attic floor distribution



Floor area: 26,8 m².
Building area: 38 m².
Building volume: 100 m³.



2A40

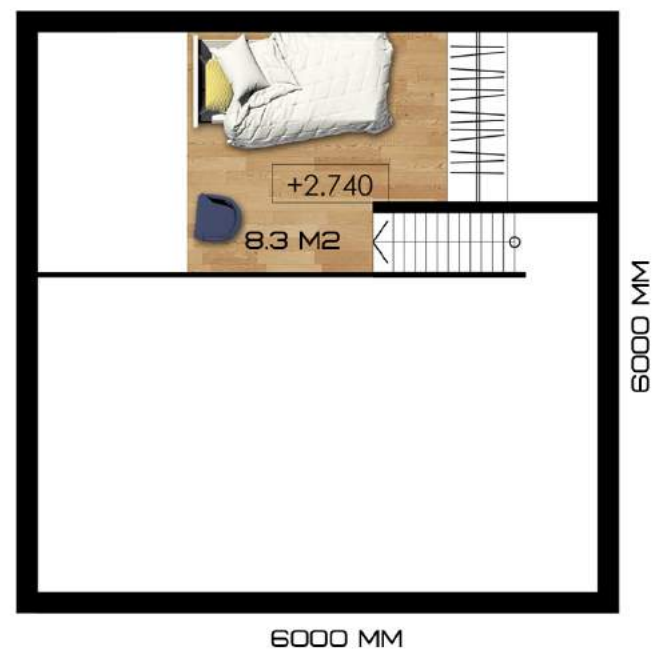
Floor area: 39,4 m². Building area: 50 m². Building volume: 150 m³.

«House 2A40» is an enlarged version of the previous «2A27». Due to the increase of the space this house has a dining area, conveniently located between the living room and the kitchen. In addition, the increase of living space allows to enlarge the bedroom area. The additional window in the kitchen provides more natural light.

Ground floor distribution



Attic floor distribution



Floor area: 39,4 m².

Building area: 50 m².

Building volume: 150 m³.

2A40

On the ground floor there is a living room, a dining area, a kitchen and a bathroom. This floor has access to the veranda. Conveniently located in the living room the staircase leads to the bedroom located on the attic floor. The house is comfortable, quite spacious and is ideal for tranquil family holidays.



2A40

Floor area: 39,4 m².

Building area: 50 m².

Building volume: 150 m³.

«House 2A40» can be detached or adjacent.

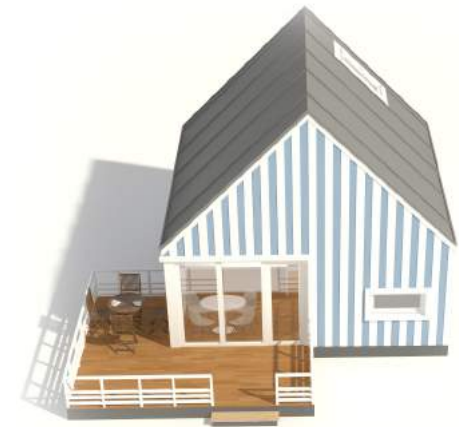
There can be a range of two, four or more houses.



Two adjacent houses



A range of four houses



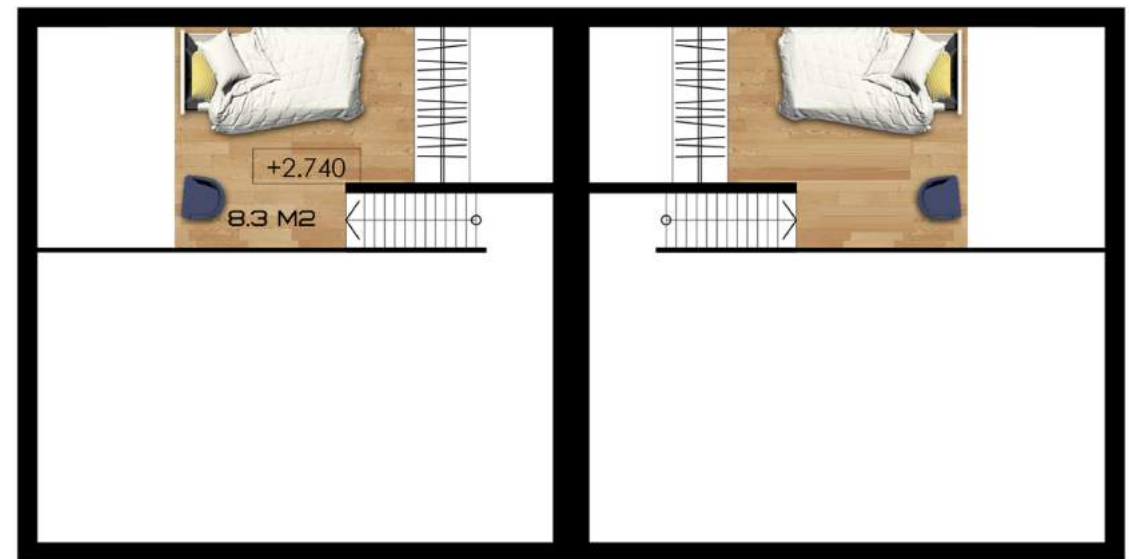
In section

Ground floor distribution

2A40



Attic floor distribution



Floor area: 39,4 m².
 Building area: 50 m².
 Building volume: 150 m³.

6000 MM



2B27

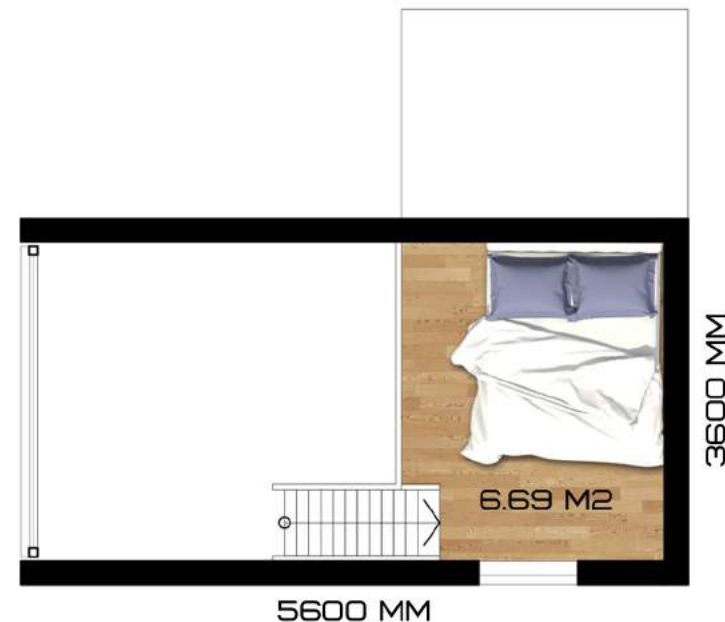
Floor area: 27,3 m². Building area: 42,5 m². Building volume: 90,8 m³.

«House 2B27» is a stylish house with panoramic windows which allow to enjoy the beautiful natural sceneries. The house is ideal for the sea shore, the river bank, mountain or wooded areas. Beautiful sceneries can also be enjoyed from the large corner veranda which has two accesses from the house. The house has all necessary spaces: a living room, an open kitchen, a bedroom and an isolated bathroom. The house is very bright and comfortable.

Ground floor distribution



Attic floor distribution



Floor area: 27,3 m².

Building area: 42,5 m².

Building volume: 90,8 m³.

2B27

On the ground floor there is a cosy living room with access to the veranda, an open kitchen and a separate bathroom. Between the living room and the kitchen there is another access to the veranda that facilitates the organization of dinners in the open air. The staircase installed in the living room leads to the bedroom located on the attic floor. All the spaces are very bright thanks to the panoramic windows.



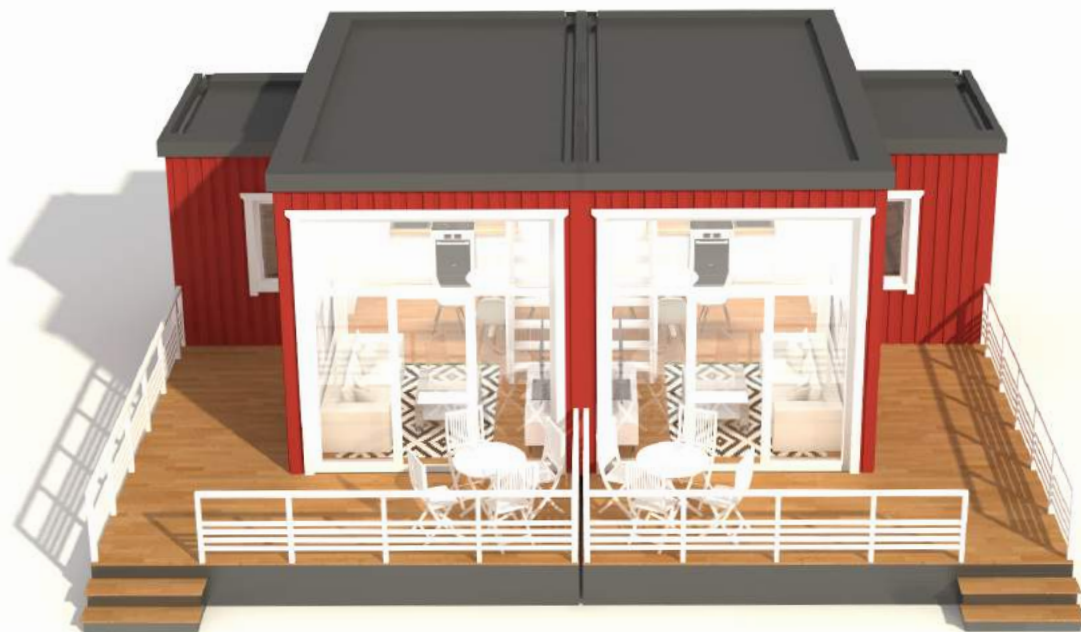
2B27

Floor area: 27,3 m².

Building area: 42,5 m².

Building volume: 90,8 m³.

«House 2B27» can be detached or adjacent.
There can be a complex of two or four houses.



Two adjacent houses



A complex of four houses

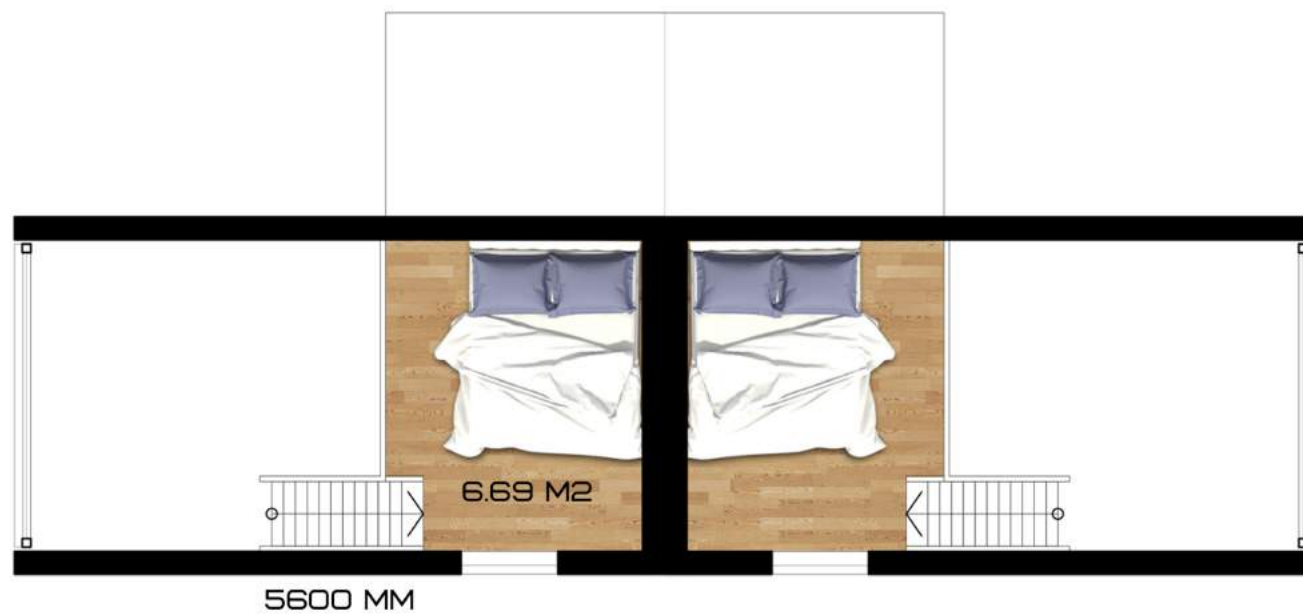


In section

Ground floor distribution



Attic floor distribution



Floor area: 27,3 m².
 Building area: 42,5 m².
 Building volume: 90,8 m³.



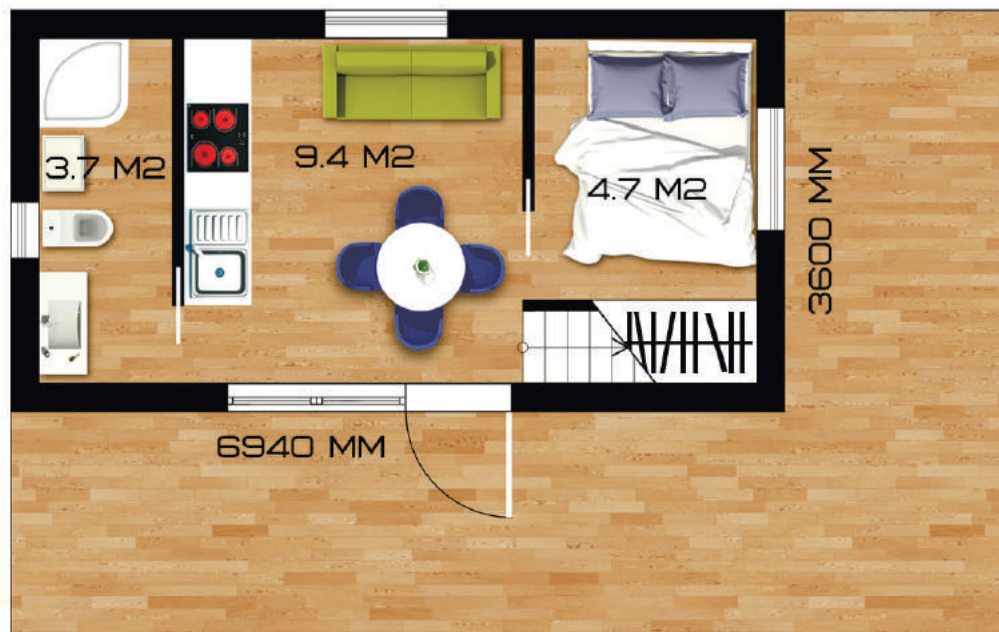
2B25

Floor area: 25 m². Building area: 50 m². Building volume: 99,6 m³.

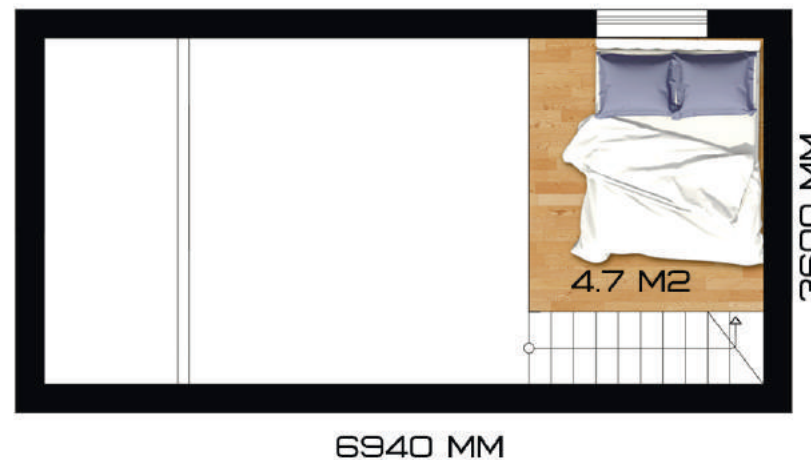
«House 2B25» is a stylish house with interesting exterior and interior design, it combines different elements of modern and classic styles. Much natural light is provided by large windows framed with elegant shutters. The interior space is organized in such a way that nothing will disturb you from enjoying the tranquility and homely atmosphere.



Ground floor distribution



Attic floor distribution



Floor area: 25 m².
 Building area: 50 m².
 Building volume: 99,6 m³.

2B25

On the ground floor there is a comfortable living room, stylishly combined with a compact kitchen, an independent bathroom and an isolated double bedroom. On the attic floor there is one more bedroom. The living room has a spacious access to the large veranda where you can organize nice outdoor dinners.



2B25

Floor area: 25 m².

Building area: 50 m².

Building volume: 99,6 m³.

«House 2B25» can be detached or adjacent.

There can be a complex of two or four houses.



Two adjacent houses



A complex of four houses

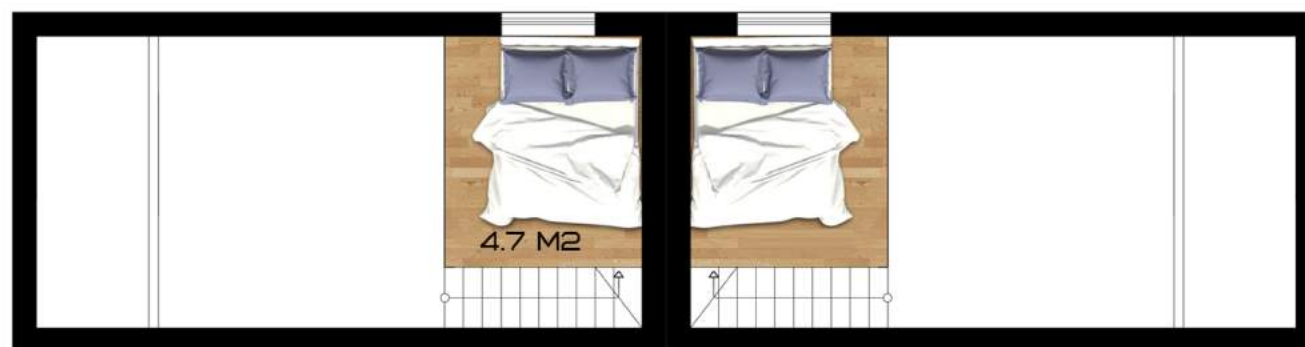


In section

Ground floor distribution



Attic floor distribution



6940 MM

Floor area: 25 m².
 Building area: 50 m².
 Building volume: 99,6 m³.



2C20

Floor area: 20,3 m². Building area: 38,8 m². Building volume: 88,9 m³.

«House 2C20» is a stylish designer house that combines maximum ergonomics and comfort. Beautiful design distinguishes this house from the others. The highlight of the house is not only a classic veranda, but also a private terrace on the attic floor. Each floor has convenient layout and outdoor space. Panoramic views from the terrace make this home ideal for the sea shore or the forest edge.



Ground floor distribution



Attic floor distribution



Floor area: 20,3 m².
 Building area: 38,8 m².
 Building volume: 88,9 m³.

2C20

On the ground floor there is a living room with an open kitchen, an independent bathroom. This floor has access to the veranda. On the second floor there is a double bedroom with access to a private terrace. Thus, this house is creatively implemented out of the conventional standards of distribution and design by significant increase of outdoor space.



2C20

Floor area: 20,3 m².

Building area: 38,8 m².

Building volume: 88,9 m³.

«House 2C20» can be detached or adjacent.

There can be a complex of two or four houses.



Two adjacent houses



A complex of four houses

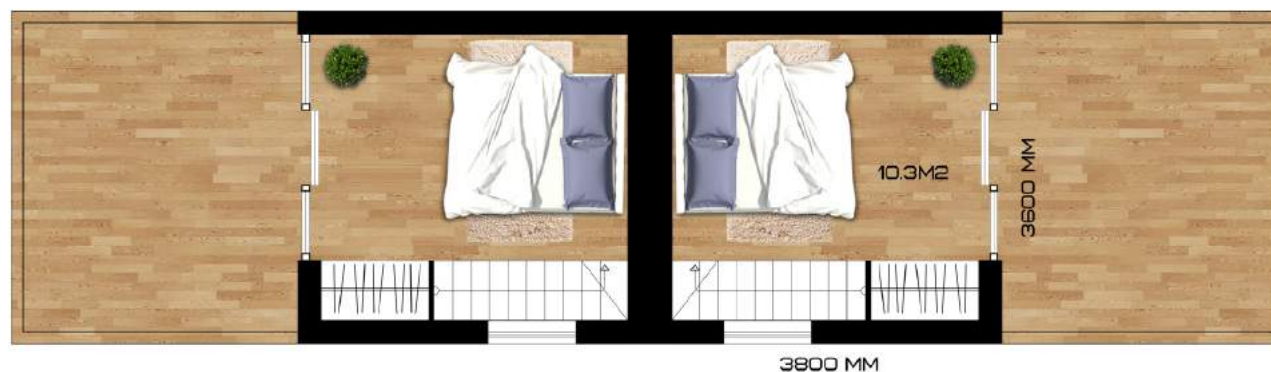


Sectional view

Ground floor distribution



Attic floor distribution



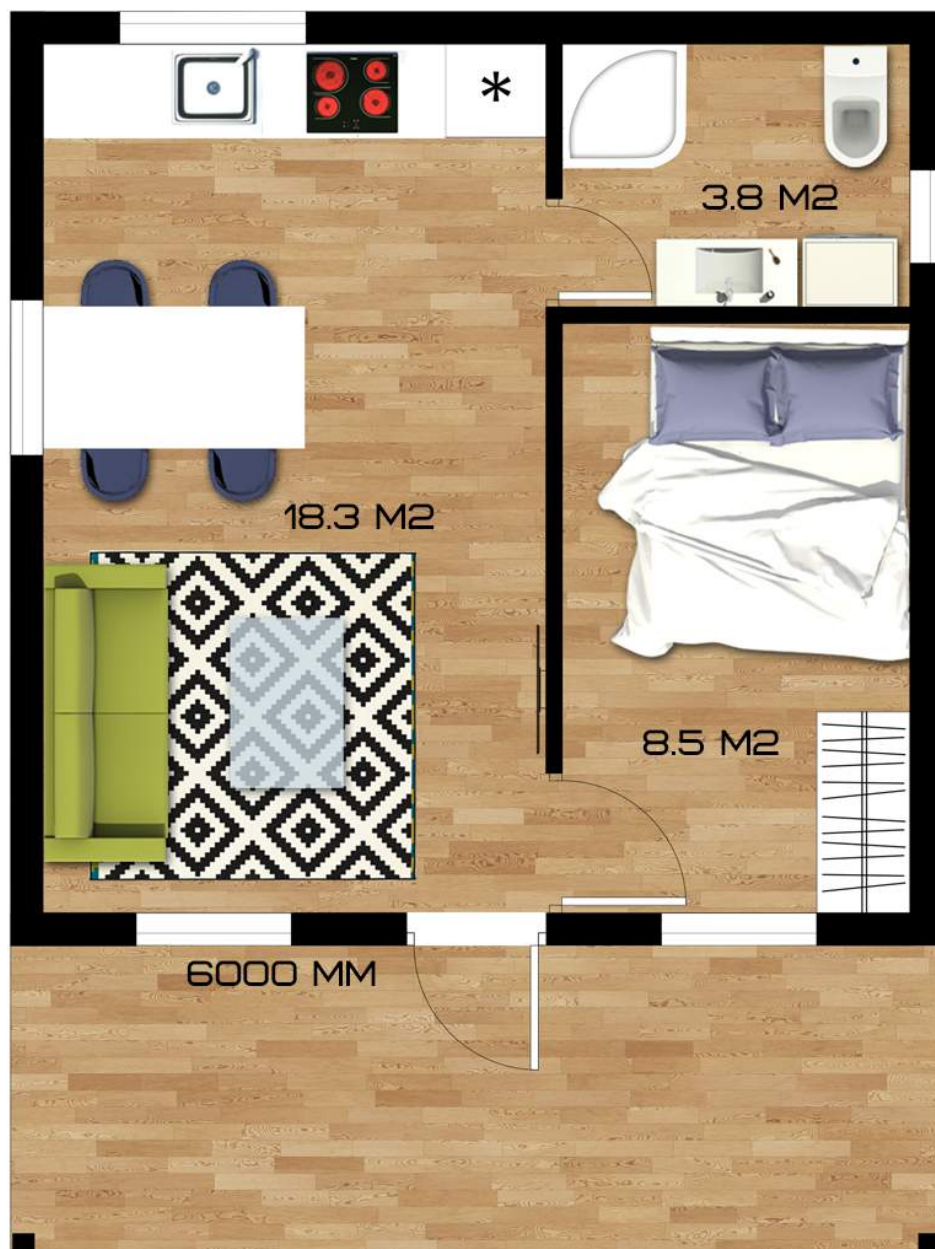
Floor area: 20,3 m².
 Building area: 38,8 m².
 Building volume: 88,9 m³.



1C31

Floor area: 31,3 m². Building area: 48 m². Building volume: 130 m³.

«House 1C31» is a comfortable single-storey house with a veranda designed for those who like to leave city noise and pass country holidays. The house is planned in such a way that you have all you need on a small area, and at the same time you have comfortable interior and enough space for convenient pastime. The house offers everything necessary for comfortable living: a living room with a kitchen, a bedroom and a bathroom. The house is quite modest and very hospitable, a pleasant veranda gives it originality. This house does not have staircases so it is ideal for families with small children or for the elderly.

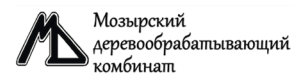


6000 MM

The distribution is convenient and rational. The entrance is located in the center of the house and leads to a warm living room which is practically combined with a kitchen.

The living room has access to a bedroom. The ground floor also comprises a separate bathroom. The advantage of this house is existence of two independent accesses to the veranda: from the living room and from the bedroom. The windows of the living room and the kitchen provide with plenty of light.





The working process with us consists of **8** steps





Belarus, Minsk region, Valozhyn Raion, Rakov,
17 September street, building №17, office 13.
Tlf.: + 375 29 105 53 13
info@ecovilla.by
www.ecovilla.by